

Gas Turbine Spares & replacement parts



Turbine Services maintains a substantial computerised stockholding of spare parts for the General Electric design of heavy duty industrial gas turbine equipment. The parts stockholding policy is continually monitored to ensure that the majority of customers' spare part requirements are satisfied ex-stock for both scheduled and unscheduled maintenance.

Listening carefully to customer needs Turbine Services is fully flexible in developing new combinations within the supply chain. These are normally established through investigation, study and discussion. Turbine Services has a variety of material support systems on offer, which include:

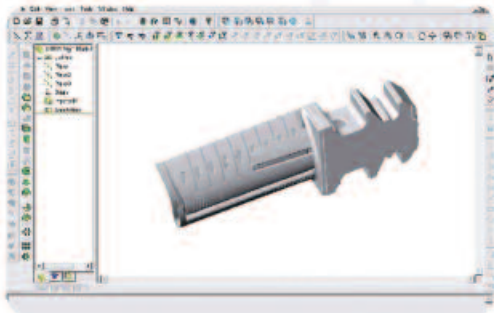
- Component exchange
- Parts repair
- Scheduled just-in-time stocks
- Consignment stocks
- Combination materials contracts
(In some cases a combination of any of these features is provided under a single materials management contract)



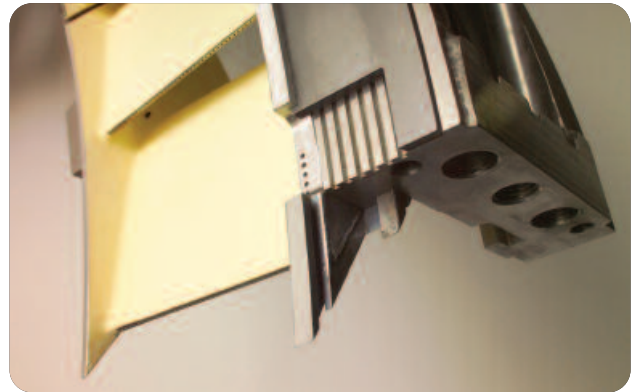
Approved quality spares...

- 24 hour global service
- Logistics management
- Full warranties
- Regional stockholding
- Emergency service
- Repairs service
- Installation service

Computer-aided engineering analysis techniques allow Turbine Services to supply the components necessary to return your equipment to full service. Components include stationary and rotating blades, shroud blocks, combustion equipment, exhaust diffusers and most auxiliary spare parts.



3D solid modelling



TURBINE SERVICES is a global provider to owners and operators of industrial gas turbines, offering an employee skill-base in excess of 2,000 man-years of experience in gas turbine maintenance solutions. With our heritage in John Brown Engineering, our primary specialization is in the heavy duty frame range of GE designed gas turbines.

Our business is founded on the strength of our technical and engineering capability, reinforced by our commitment to quality and customer satisfaction that is demonstrated by our accreditations (ISO 9001:2000) and registrations (Achilles, Supply Line, FPAL and Repro).

In addition to our extensive experience, our customers also benefit from the high-tech capabilities of our parent company, Chromalloy. Leading the industry in advanced technology derived from 60 years of aero and industrial gas turbine component experience, we offer state-of-the-art component, repair, coating and manufacturing technologies.

Turbine Services is a division of Chromalloy Gas Turbine Corporation with interests in the global Aero & Industrial Gas Turbine market sector.

Services include:

- Plant operation & maintenance
- Field & engineering support
- Component refurbishment
- Replacement spare parts
- Turbine control systems
- Plant operator training
- Rotor Overhaul
- Condition Monitoring
- Long Term Service Agreements
- Turbine Refurbishment



Gas Turbine | Maintenance | Repairs | Spares | Parts

Turbine Services

Ground Floor, Venture Building, Kelvin Campus
 West of Scotland Science Park, Glasgow G20 0SP, Scotland, UK
 Office: +44 141 945 7000, Fax: +44 141 945 7001
 info@turbineserviceslimited.com | www.turbineserviceslimited.com
 www.chromalloy.com